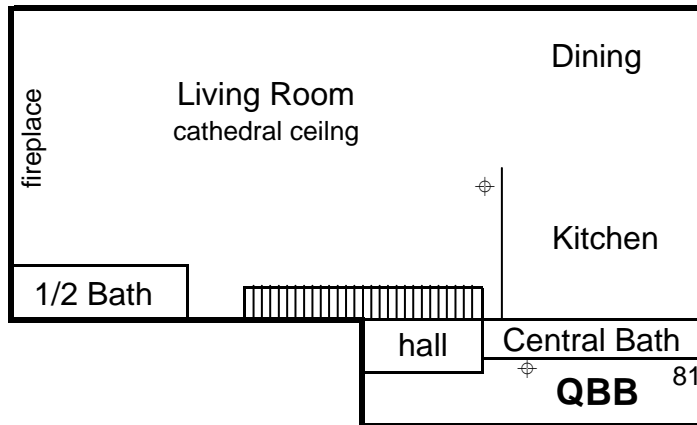
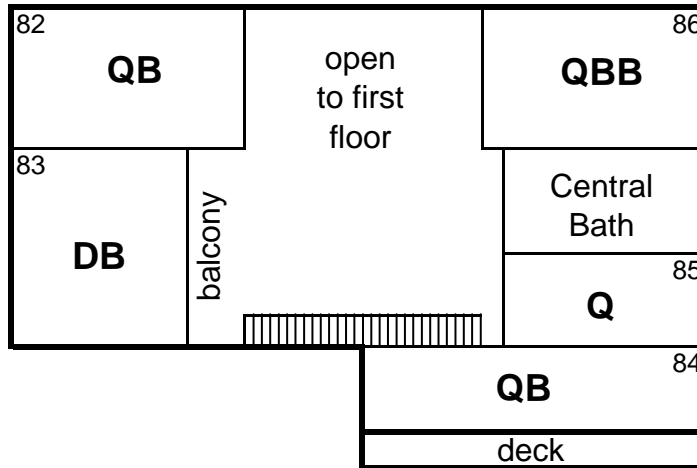


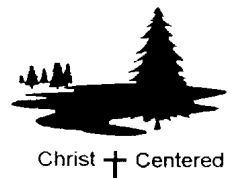
Mountain Laurel Lodge

Room Layout



Q = Queen
 D = Double
 B = Bunk (two singles)

⊕ Thermostat location



Mountain Laurel Lodge

Kitchen Inventory

*You can expect to find this kitchen equipped to serve approximately 30 people with the items listed below.

*Please wash and return items to their designated place after using them.

*Report any damaged or missing items to the office.

APPLIANCES

microwave
6-burner kitchen range, 2 ovens
2 refrigerators
(2) two slice toasters
(2) 30-cup percolators
2 coffeemakers & filters
electric knife
2 dishwashers

SILVERWARE

50 knives
50 forks
50 spoons
7 serving spoons

DINNERWARE

60 plates
40 soup/salad bowls
40 dessert plates
40 mugs
40 water glasses

BAKE PANS

6 assorted baking pans
4 cookie sheets
pizza pan
broiler pan unit
roasting pan
2 8" x 8" glass baking dishes

COOKWARE

2 assorted stockpots
5 frying pans
3 assorted saucepans

PREPARATION & SERVING EQUIPMENT

7 oval china serving bowls
2 small oval serving platters
2 large serving platters
(8) 2 qt. pitchers
1 small pitcher
assorted glass & plastic bowls
2 colanders
3 vegetable peelers
assorted knives
3 pizza cutters
3 ladles
2 metal pancake turners
4 plastic pancake turners
egg beater
vegetable grater
8 large spoons
2 large forks
2 wire whisks
3 tongs
2 wooden spoons
large strainer
3 rubber scrapers
rolling pin
1 set measuring spoons
1 set measuring cups
2 ice cream scoops
4-cup liquid measure
1-cup liquid measure
potato masher
3 small metal tongs

MISC. EQUIPMENT

2 booster seats
high chair
2 hand can openers
4 cutting boards
tea kettle
3 salt & pepper shaker sets
cream/sugar containers
5 ice cube trays
dish drainer
2 dish pans
potholders
dish cloths
dish towels
dish soap
dishwasher soap
stainless steel pot scrub pad

ITEMS NOT PROVIDED

salt, pepper, or cooking spices
paper towels
toiletries
ice
disposable plates or cups
napkins
aluminum foil, plastic wrap, ect.

**Please use the cans
provided in this kitchen for
your garbage and
recyclables. THANK
YOU!**

